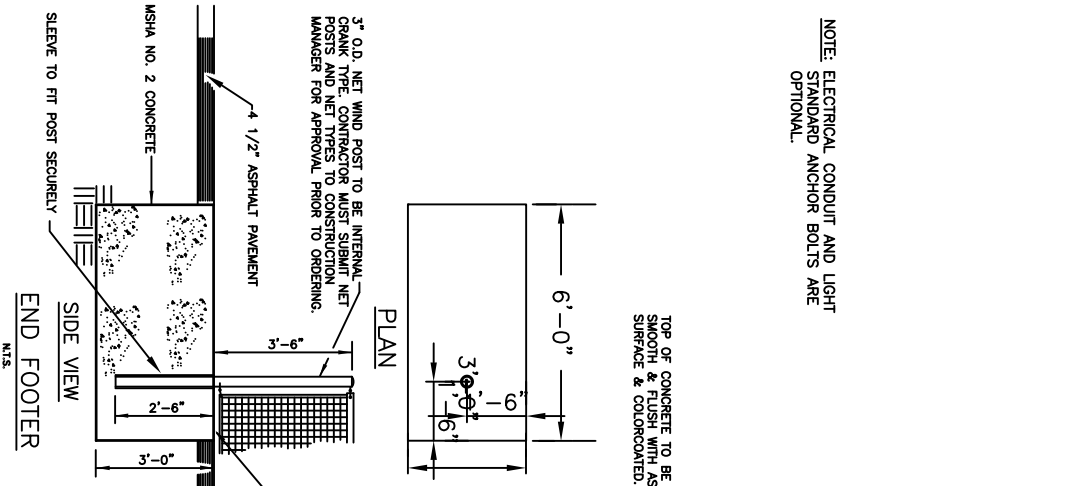
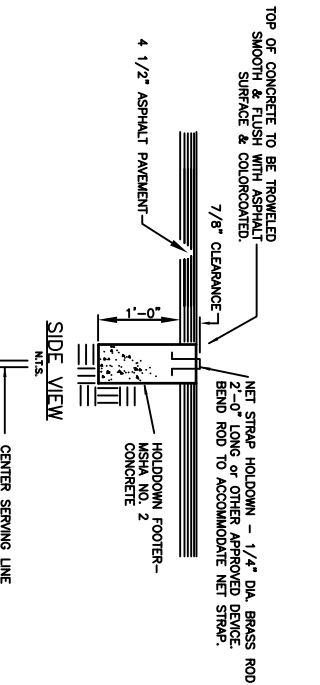
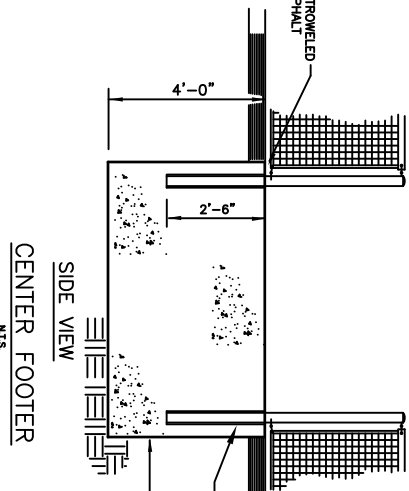
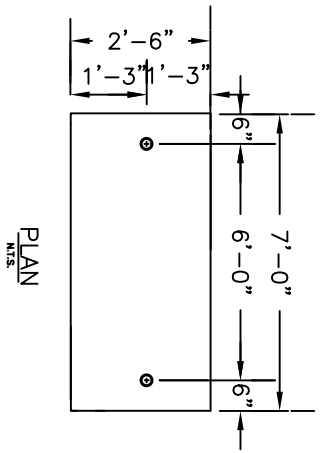


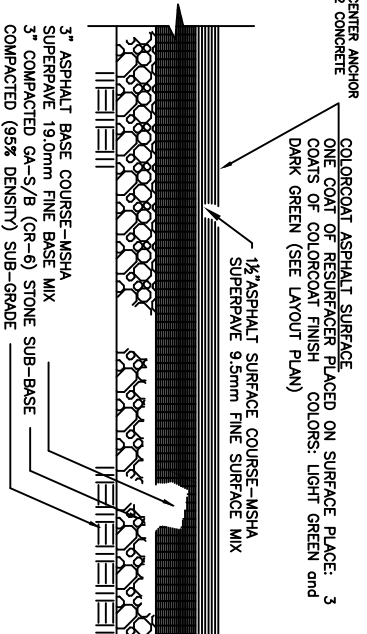
NOTE: ELECTRICAL CONDUIT AND LIGHT STANDARD ANCHOR BOLTS ARE OPTIONAL.



### NET POST ANCHORS



### NET HOLDOWN FOOTER



THE MARYLAND-NATIONAL CAPITAL PARK AND PLANNING COMMISSION  
 Department of Park and Planning, Montgomery County, Maryland

PARK DEVELOPMENT DIVISION 8950 BRUNETT AVENUE SILVER SPRING, MD 20901	DATE APPROVED	TENNIS COURT PAVEMENT NET POST DETAILS	REVISION	DATE	STANDARD NO.
	CHIEF ENGINEER				203
SUPERINTENDENT OF PARKS					