

Brookside Nature Center
Wheaton Regional Park
1400 Glenallan Ave.
Wheaton, MD 20902
301-962-1480
www.brooksidenature.org

Email us at mcp-
brooksidenc@montgomeryparks.org

An adult must accompany all children. Programs for “Ages xx – adult” and “All ages” require adult registration.

Register online for programs at parkpass.org. The course number (#####) is next to the title.

Cancellation policy: To cancel your registration, submit a written request to us (email is OK). If your written request is received at least five business days before the program begins, you may choose to receive a full credit on your ParkPASS account, or a refund less a 20% administrative fee. For programs with fees less than \$10, you can only receive a credit to your ParkPASS account.

October 2010						
S	M	T	W	T	F	S
					1	2
3	4	5	6	7	8	9
10	11	12	13	14	15	16
17	18	19	20	21	22	23
24	25	26	27	28	29	30
31						

2 & 3 Harvest Festival

Join the naturalists at the Agricultural History Farm Park.
11 am - 4 pm, All ages
No reservations required.
Fee for parking & some crafts

5 Hands On Science “Spinners” (116055)

This 4-week series focuses on spinners. What does friction have to do with how quickly a marble or button races through a maze? How is a spinner like a wheel and axle?

How does the size of a wheel change the distance it covers? Series is on Tuesdays beginning Oct 5 and ending Oct 26. Reservations required.
1 – 2 pm, Ages 4 - 5
Fee: \$25

5 Adult Autumn Walk (115811)

Explore the woodlands and streams of the nature center looking for signs of autumn animals, leaves and birds. Reservations required.
6 – 7 pm, Adults
Fee: \$4

6 Pre-K Travelers (116052)

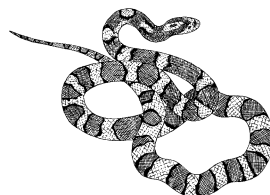
Find out how animals, seeds, and leaves travel during autumn. Today we’ll learn about traveling seeds. Reservations required.
October 13 (116053): Foliage Frolic
1:30 – 2:30 pm, Ages 3 - 5
Fee: \$4

7 Home School Special “Watersheds” (115951)

Learn about the impact of runoff and erosion in our watersheds. We’ll experiment using a watershed model, and look for signs of erosion along our stream. Reservations required.
2 – 3 pm, Ages 6 – 12
Fee: \$4

9 Creature Feature (114603)

Have you ever seen a salamander or a box turtle? Meet and greet some of our resident reptiles and amphibians up close. Reservations required for all; adults are free.
10 – 11 am, All ages
Fee: \$4/child



10 Explore a Park (115813)

New to the area? Or just want to get out for a hike! Join us as we explore different parks in the county. Today we’ll hike the Seneca Greenway Trail. Free, but reservations required. We’ll contact you with meeting site information.
9 – 11 am, Adults

10 Make It and Take It “Grab Bag” (115814)

Easy-to-make crafts that you can take home. Drop-in anytime during program hours! Choose two projects to make from our grab bag table. Fee is for both bags.
2 – 3:30 pm, All ages
Fee: \$2
No reservations required.

13 Pre-K Travelers (116053)

Find out how animals, seeds, and leaves travel during autumn. Today we’ll learn about traveling leaves. Reservations required.
1:30 – 2:30 pm, Ages 3 - 5
Fee: \$4

14 Tree House (116056)

Would you like to live in a tree? Learn about animals that depend on trees for homes, food and protection. We’ll look for animals in their tree homes. Reservations required.
1:30 – 2:15 pm, Ages 3 – 5
Fee: \$3

15 School’s Out Hike (116057)

School’s out! Enjoy the fall weather on a 2-3 mile hike in Rock Creek Park. Reservations required.
10 am – noon, Ages 6 – 12 w/adult
Meet: From East West Hwy, turn on to Beach Drive heading toward DC. Meet in the Boundary Bridge parking area, the parking lot on the left at the MD/DC border of Rock Creek Park.

15 Family Fossil Foray (114605)

Look for fossils and find out how they are made. We'll contact you with directions to the meeting site. Program is free but attendees must pay any park entrance fee. Reservations required.

1 - 3 pm, Ages 3 - adult

Meet: Bayfront Park (Brownie's Beach) just south of Chesapeake Beach, MD. Take the Beltway to Exit 11A, MD Route 4 south/Pennsylvania Ave. east to MD Route 260 east. At Chesapeake Beach, turn right (south) on MD Route 261. Cross the stream at the bottom of the first hill south of town and turn left into the parking area. Take the path 1/4 mile to the beach and cliffs.

16 Meet American Girl Author, Valerie Tripp (116049)

Valerie Tripp, author of many books in the *American Girl* series, will share her thoughts about the characters and their relationship to nature, and about how she gets ideas! Bring a book for her to sign as well as any questions you have about the *American Girls*. A juice and cookie reception follows. Reservations required.

10:30 - 11:30 am, Ages 8 - 12

Fee: \$4

17 Ladies Hike Out (114609)

Want to hike but don't know where to go? Meet other women as we hike together along different park trails. Today we'll hike Acorn Woods Trail in Wheaton Park. Meet at the nature center.

Reservations required.

11:30 am - 1 pm, Adults

21 Flying Squirrels (114556)

Catch a glimpse of these nighttime gliders and find out how they live.

Rain cancels program.

6:15 - 7 pm, All ages

No reservations required.

26 Puppet Show "Mousekin's Golden House" (114549)

Mousekin discovers an old jack-o-lantern & finds it's the perfect home. Reservations required.

11:30 am - noon, Ages 1 - 12

Fee: \$2

27 Great Pumpkin Hunt (114611)

Join us as we search for the Great Pumpkin along our trails. Will we find a trick or a treat? Optional - wear a trail-friendly costume! Reservations required.

10:30 - 11:30 am, Ages 3 - 5

Fee: \$5

27 Puppet Show "Mousekin's Golden House" (114550)

Mousekin discovers an old jack-o-lantern & finds it's the perfect home. Reservations required.

1:30 - 2 pm

Ages 1 - 12

Fee: \$2

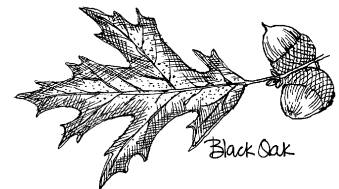


31 Family Forest Walk (114613)

Enjoy a woodland walk and discover how the plants and animals of the forest adapt to the season. Reservations required.

11 am - noon, Ages 3 - adult

Fee: \$4

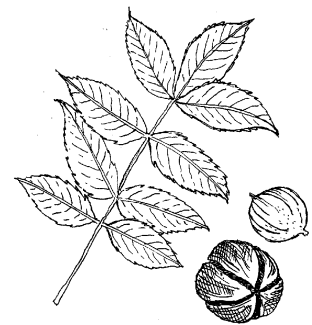


30 Fox Family in Fall (114612)

Find out what happens to the fox family as winter approaches and the weather gets colder. Learn where foxes live, hunt and play. This 3/4 mile walk includes some hills. Wear sturdy shoes. Reservations required.

10:30 - 11:30 am, Ages 3 - adult

Fee: \$4



30 Halloween Scavenger Hunt (116058)

Pick up a trail map and scavenger hunt list at the nature center and search trails for signs of Halloween. Turn in your sheet and collect a small prize. Reservations required.

2 - 2:30 pm, Ages 3 - 12