

SITE DESIGN GUIDELINES

LOCATION



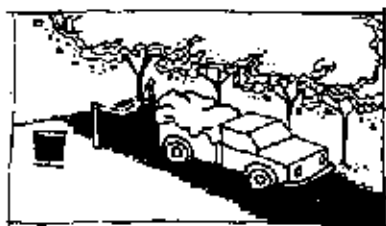
The location of the recreation facilities should be determined by the following:

- Facilities should be located within reasonable and appropriate walking distance.
- Facilities should be appropriately located to help draw people, provide a sense of security, and create a sense of community.

ACCESSIBILITY



- A system of roads and paths of suitable location and width should be provided to ease access from the units to recreational facilities.
- Main pathways should connect main points of access to facilities.
- Consideration should be given to handicapped accessibility.
- Play areas should be designed to minimize potential contact between children and traffic hazards.
- Play areas within the playground should be accessible from main pathways.
- Entrances to recreation facilities should be clearly identified and used to direct child pedestrians along safe routes to the playground.
- Reasonable access for maintenance must be provided.
- Adequate parking facilities should be provided at recreation sites, particularly where large facilities, such as ballfields or swimming pools are provided.

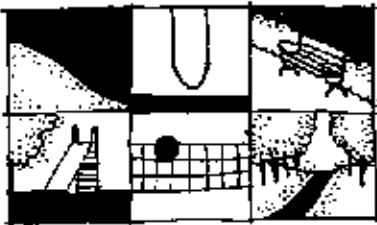


**ENCOURAGING
SOCIAL CONTACT**



- Settings that stimulate social interaction - bench and platform groupings, sitting areas, small shelters - should be provided.
- Visual barriers should be avoided.

DIVERSITY



- Diverse play settings should be provided to generate the greatest variety of play activity patterns. Playground equipment should be provided in most cases.
- A variety of active and passive recreational facilities should be provided.

**DEFENSIBLE SPACE
AND VISIBILITY**



- Except as determined by the Planning Board, recreation areas must be visible from adjacent units and/or street.
- Visual barriers into the facility, such as tall hedges, should be avoided.

LANDSCAPING



- An attractive variety of landscape settings should be provided.
- Landscaping should also be used to improve the microclimate of the facility to provide shade and protection from wind.

EFFECTIVE LAYOUT OF ENTIRE AREA

- To assure safety and a satisfactory plan, adequate space should be allowed for all facilities.
- In large facilities, clearly defined entrances should be provided to orient users to the site.

UTILIZATION AND CONSERVATION OF NATURAL FEATURES



- Natural features may be preserved and utilized for recreation. A natural slope may be used for an outdoor theater or for winter sports, a grove of trees for a picnic area or music shell, and a large, level open area for an athletic field. Suitable, properly located trees should be preserved.

SAFETY

- The location and arrangement of apparatus, game courts and fields, roads, and paths should be designed to assure safety.

CONSIDERATION OF NEIGHBORS



- The recreation area should be designed so as to give the adjacent units a minimum of annoyance considering normal utilization of the site. Sections adjoining residential property should be used for relatively quiet activities; play fields and courts should be laid out so balls will not be batted into adjacent yards and lights should not shine into adjacent homes. Use of berms and landscaping should be considered for compatibility.

APPEARANCE

- Every recreation area should be designed to present a pleasing appearance from within and without. The use of harmonious color choices, visual coordination of materials, and pleasing forms is important to achieve a high visual quality.

MAINTENANCE



- Adequate provisions for maintenance must be made for all facilities. Careful planning must assure economy in maintenance.